

# Achieving Earlier Diagnosis of Cancer: Why we still need to act

Nick Ormiston-Smith



# THE PREMISE

- Striving for earlier diagnosis with the aim of securing more patients the option of **potentially curative treatment**
- Key part of our **organisational strategy** to see 3 in 4 patients surviving cancer for at least 10 years by 2034



# EARLY DIAGNOSIS STRATEGY



CRUK Ambition

75% survive their disease at least 10 years by 2034



P&I Early Diagnosis Vision

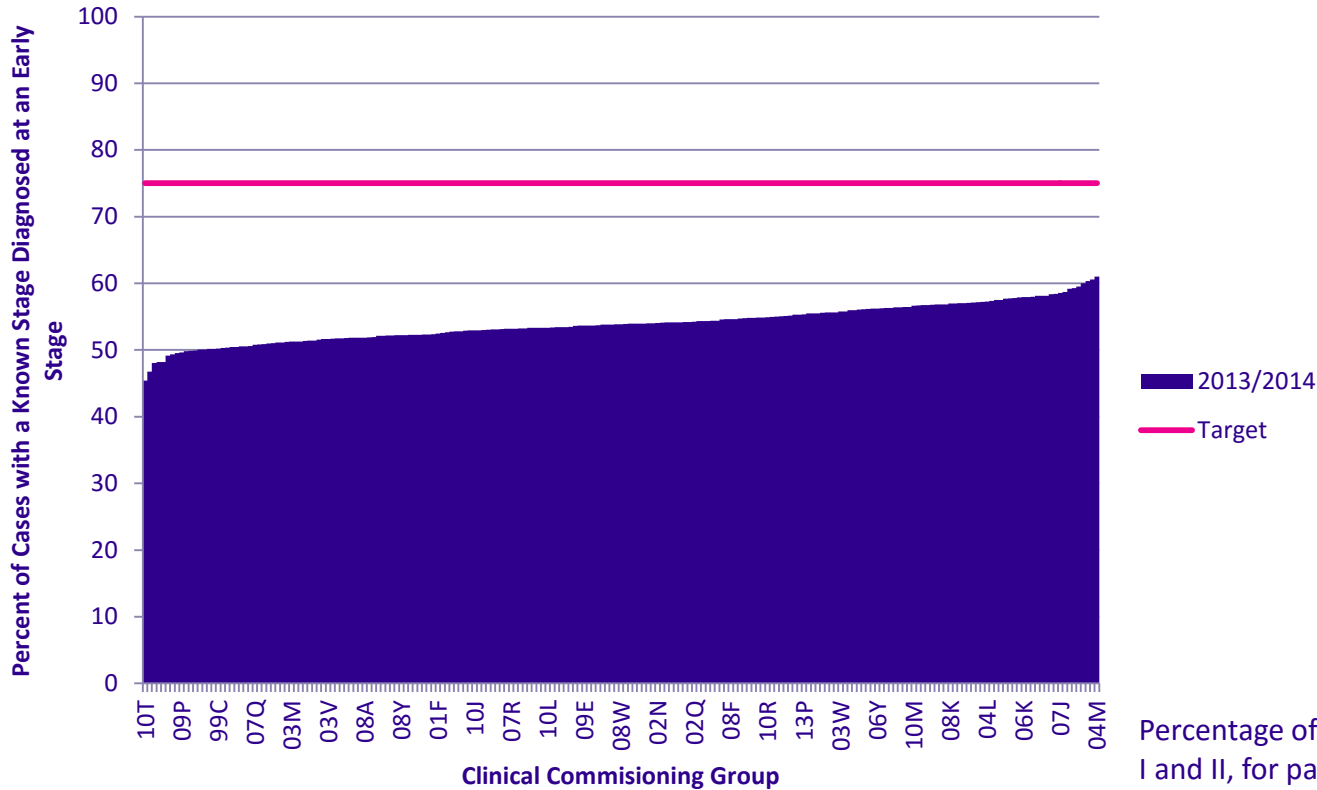
- Everyone with cancer is diagnosed and treated as promptly and effectively as possible, so they have the **best chance of surviving** and an **improved experience of care**



P&I Early Diagnosis Aim

- **3 in 4 patients diagnosed with early stage disease by 2034**, to be achieved alongside a **reduction in absolute numbers of late-stage cancers**, particularly stage IV

# WE ARE A LONG WAY OFF OUR AIM



Percentage of cases, of known stage, diagnosed at stage I and II, for patients diagnosed in 2013 and 2014 combined. Based on Public Health England data, published in 2016.

# WHY WE STILL NEED TO ACT

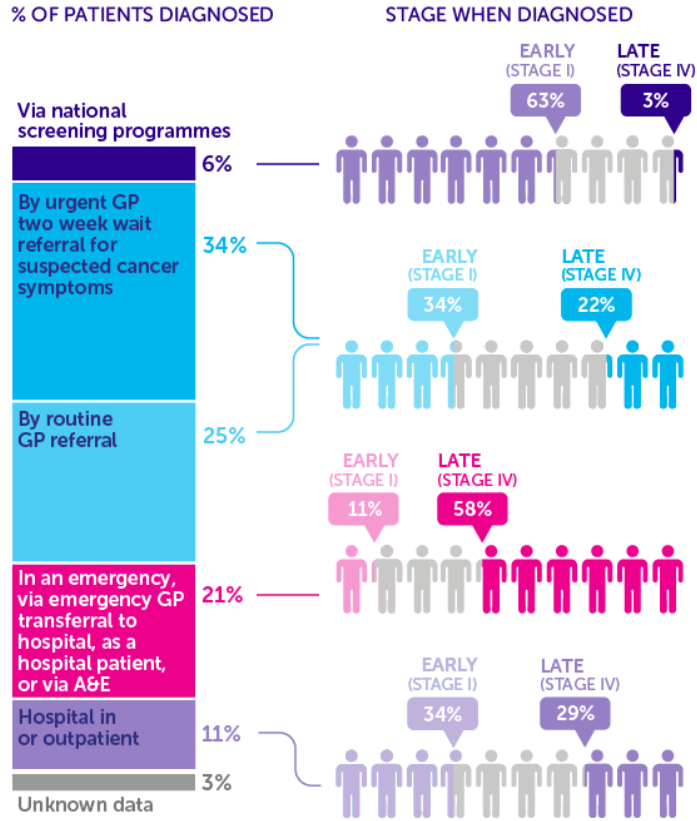
	1	2	3	4	X
Lung	14%	7%	19%	48%	12%
Pancreas	4%	10%	7%	47%	31%
Stomach	8%	14%	17%	34%	27%
NHL	16%	11%	14%	34%	25%
Oesophagus	10%	13%	29%	30%	19%
Colorectal	15%	23%	25%	22%	15%
Kidney	35%	7%	14%	20%	24%
Ovarian	30%	5%	30%	18%	17%
Prostate	30%	19%	18%	17%	16%
Other	9%	6%	7%	15%	63%
Bladder	37%	22%	6%	14%	22%
Uterine	68%	7%	10%	7%	8%
Breast	39%	35%	8%	5%	13%
Melanoma	63%	17%	5%	2%	12%

**Thousands and thousands** of patients are diagnosed with advanced disease each year

Substantial variation across cancer types, and by different 'routes'

Stage at diagnosis by cancer type (combined data for patients diagnosed in 2013 and 2014), England. Based on Public Health England data, published in 2016. Pancreatic, Stomach and Oesophageal Cancers 2014 only.

# THE 'ROUTE' TO A CANCER DIAGNOSIS



Source: National Cancer Intelligence Network, data for England 2012-2013

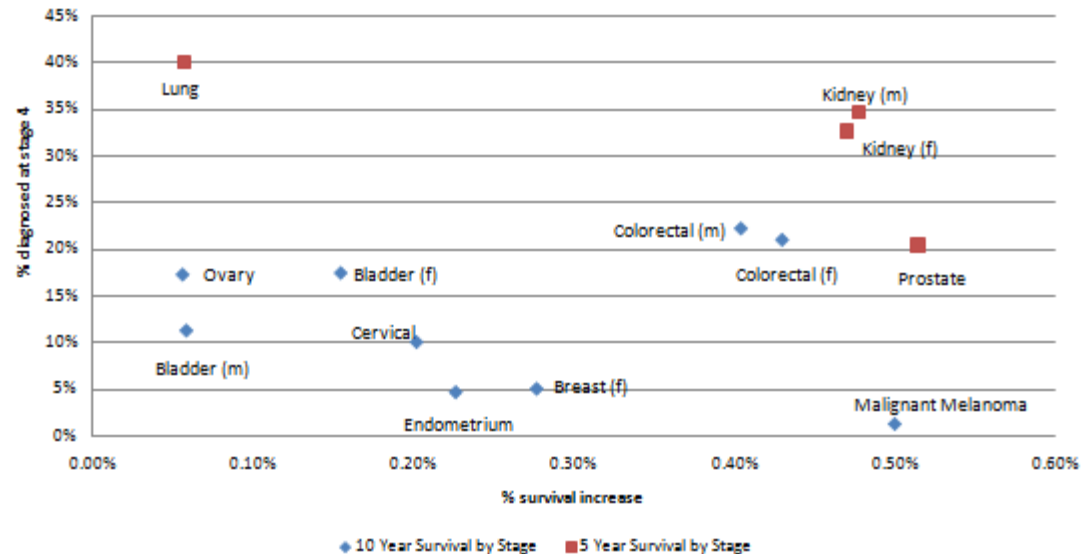
In recent years, we've learned a good deal about how patients come to be diagnosed with cancer – their **'Route to Diagnosis'**

The analysis reinforces the **important role of screening** in detecting early stage cancer

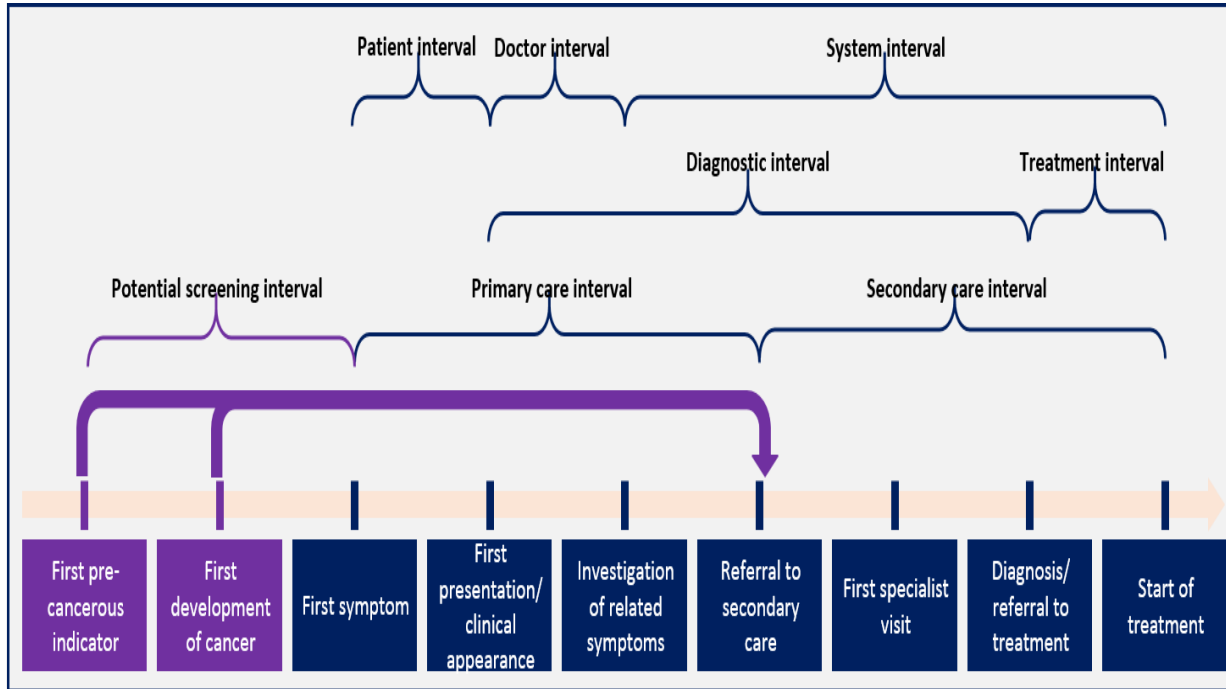
But at the moment **most patients are diagnosed outside of the NHS screening programmes**

# SHIFTING STAGE ACROSS THE CATEGORIES (Unpublished Analysis)

Possible Survival Improvement (from stage 4 to stage 3) and Per Cent Diagnosed in Stage 4



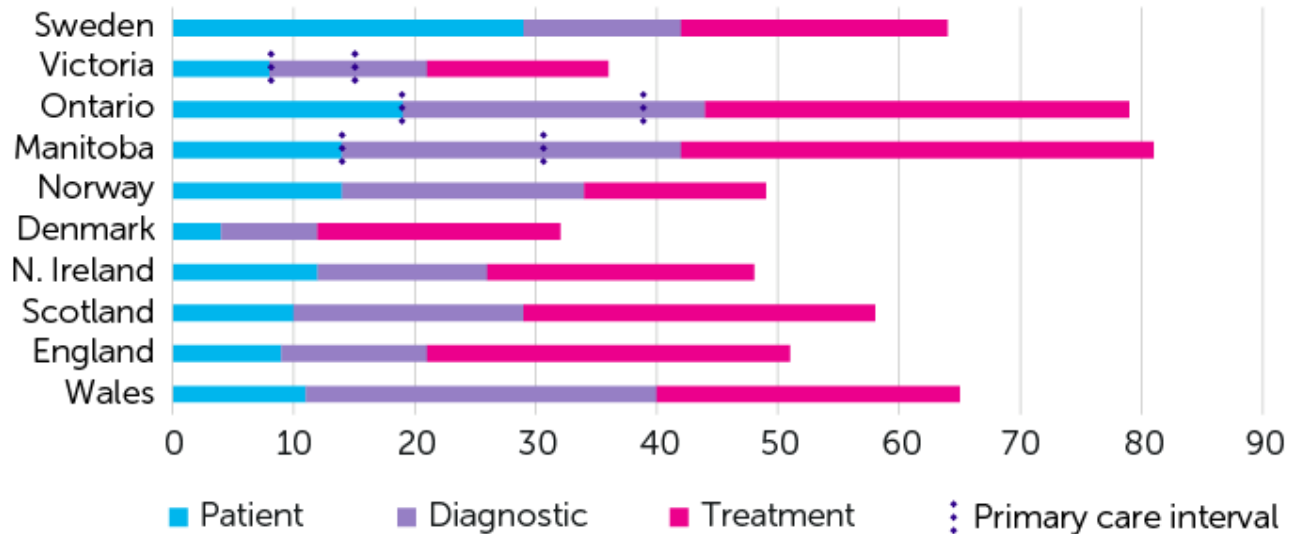
# THE DETECTION/DIAGNOSIS PATHWAY



Summary of the pathway, outlining key steps and intervals in asymptomatic and symptomatic diagnosis of cancer. Courtesy of 2020 Delivery.



# WE KNOW THAT THERE ARE DIFFERENCES IN TIMES INTERVALS ALONG THE PATHWAY



\* Norway, Denmark and UK nations reported 0 day primary care interval

\*\* No primary care interval reported for Sweden

\*\*\* Jurisdiction order based on highest to lowest breast cancer survival

Median intervals for breast cancer patients (days)

# WE KNOW THAT HELP SEEKING FOR SYMPTOMS **ISN'T ALWAYS TIMELY**



**BE CLEAR ON CANCER**

**BE CLEAR ON CANCER**

**If you've been coughing for 3 weeks, it might not be 'only a cough', so tell your doctor.**

Everyone gets a cough, like colds and flu. But if you've had one for more than three weeks you should see your doctor. Coughing could be a sign of lung cancer. Of course, in the vast majority of cases it won't be cancer. But if from something wrong, finding it early means it's more likely to be treatable, so tell your doctor.

**BE CLEAR ON CANCER**

© NHS UK



**THIS LITTLE KIT SAVES LIVES FROM BOWEL CANCER**

**IT'S EASIER THAN YOU THINK**

**The test can detect invisible early signs of bowel cancer**

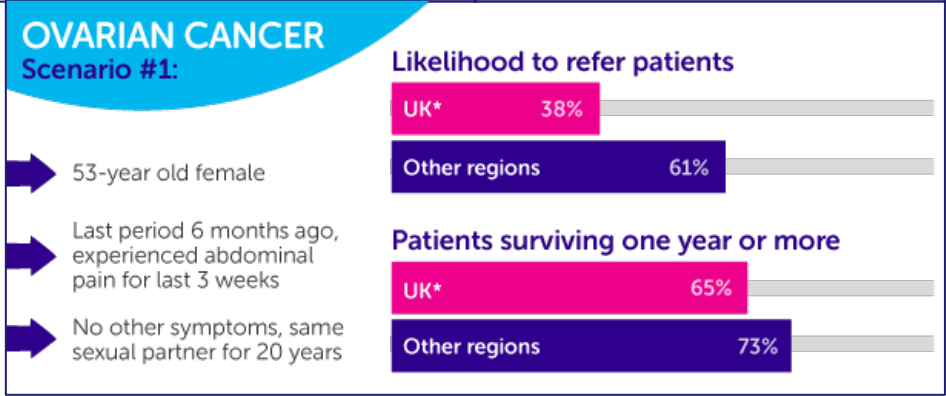
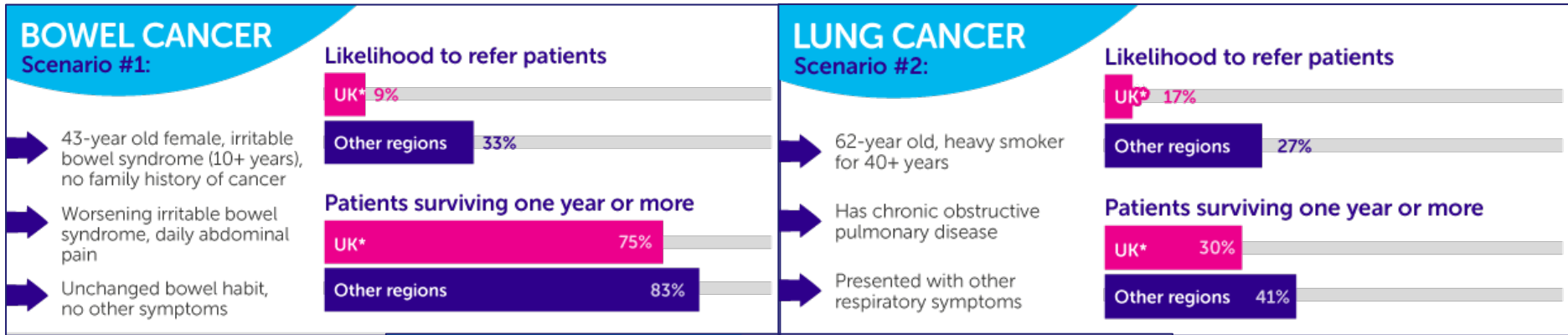
**Aged 60-74? Every two years you will receive this free NHS test kit in the post**

Call 0800 800 40 40 to speak to one of our nurses [cruk.org/bowel/screening](https://www.cruk.org/bowel/screening)

**CANCER RESEARCH UK**

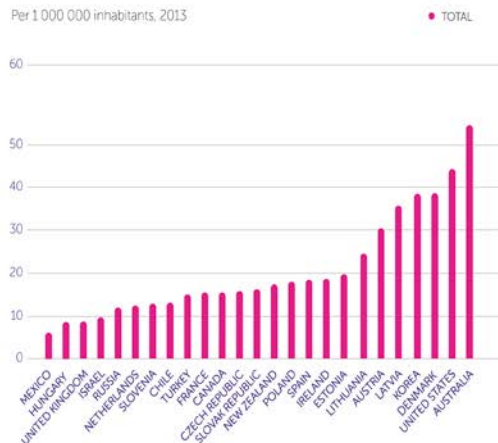


TE 23T 8HA8 G4 6EADI2E77 83 AC8 C39D 4A68b E#4 AI2  
 I28E62A8I32A 796 VIVA DIFFE6E2CE7

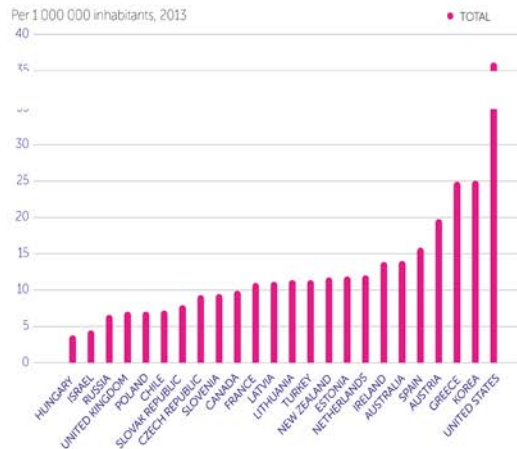


TE  $\overline{23}$ T TE HAVE  $\sqrt{E}$  $_{77}$  I $_1$ AGI $_2$ G E $_{59}$ I $_{41}$ E $_{28}$  A $_2$ D FETE $_6$   
 $_{86}$ AI $_2$ ED  $_{78}$ AFF I $_2$   $_{8}$ HE  $_{9}$

### COMPUTED TOMOGRAPHY (CT) SCANNERS



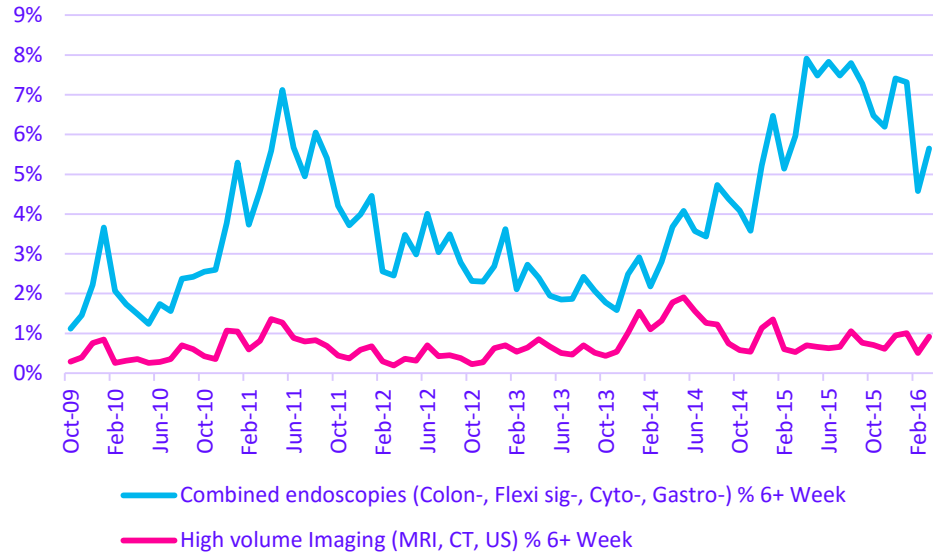
### MAGNETIC RESONANCE IMAGING (MRI)



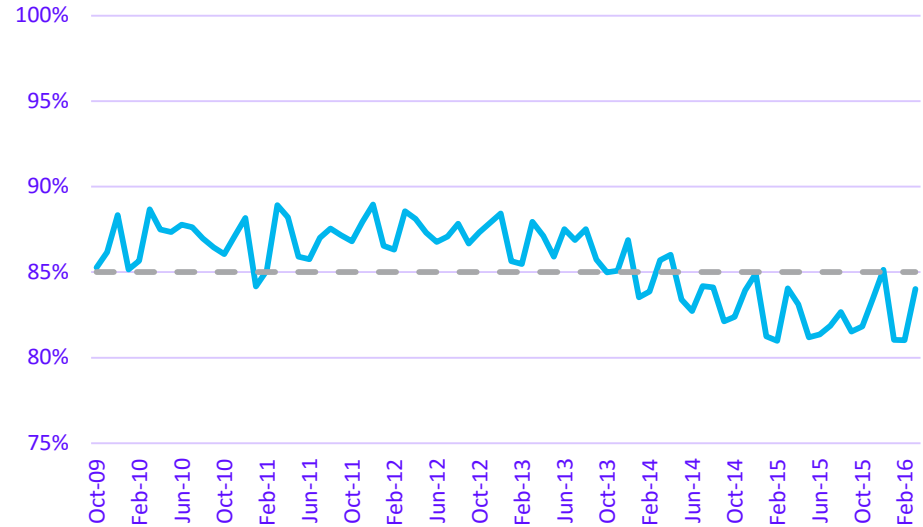
Fewer trained radiologists

# WE KNOW THAT THERE ARE **BLOCKAGES** IN THE SYSTEM

Percent of patients waiting more than 6 weeks for a diagnostic test



Performance against 62 day standard from GP Urgent Referral to First Treatment



# **CRUK IS COMMITTED TO IMPROVEMENTS IN THE DIAGNOSIS OF CANCER**



**Policy & Advocacy**

**Research funding and  
management**

**Implementation &  
Facilitation**

# WE FUND RESEARCH TO ADDRESS THE GAPS IN KNOWLEDGE

PREVENT

DIAGNOSE

TREAT

OPTIMISE

BUILD OUR UNDERSTANDING OF CANCER

FACILITATE A MAJOR SHIFT IN EARLY DETECTION RESEARCH

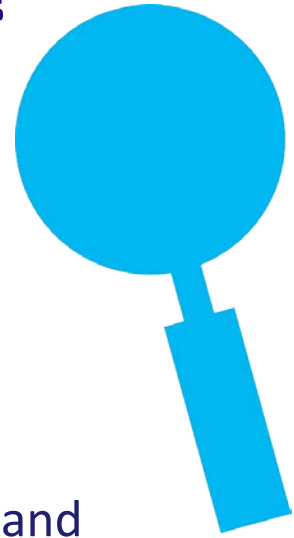
TACKLE CANCERS WITH SUBSTANTIAL UNMET NEED

ACCELERATE THE TRANSLATION OF RESEARCH

DEVELOP THE CANCER RESEARCH LEADERS OF TOMORROW

# WHAT DO WE NEED FOR THE FUTURE?

- Research and action across the pathway
- Better ways to identify early stage disease:
  - Biomarkers
  - Screening
  - Diagnostics
- Prompt response to potential symptoms, by both patients and professionals – more investigation
- Alternative diagnostic pathway models
- Timely adoption into practice
- Reduction in unwarranted variation and inequality





Thank You for  
Listening

